

Quarterly News & Events

Connected to our values of *collaboration, accountability and transparency, service, and rigor* we are proud to launch two **NEW** event series. Through each of these series it is our hope to create a forum of which to discuss prominent research, issues and topics related to global development practice and gain insight into how we can transfer these learnings into practice.



Event Launch: Webinar Series

In September, we welcomed Dr. Neil Bilotta who led a presentation on ***Ethics in Global Social Development***. Dr. Bilotta's presentation explored how power and colonialism impact cross-cultural research and offered some initial practices to challenge contemporary research and practice. In case you missed it, a recording will be made available on our [YouTube channel](#).

Save the date!

The next webinar "*Continuing global work in the COVID-19 pandemic*" on **November 19th from 9am - 10am EST** will feature a panel of experts to discuss how COVID-19 has impacted their work.

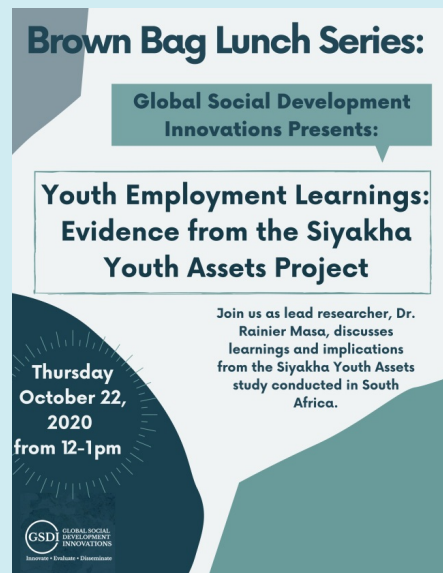
Launched TODAY: Brown Bag Lunch Series

We're excited to begin our lunch series with a discussion from Lead Researcher, Dr. Rainier Masa. Dr. Masa discussed learnings and implications from the Siyakha Youth Assets study conducted in South Africa.

In case you missed it, a recording will be made available on our [YouTube channel](#).

Save the Date!

The next lunch series will be held in December. Grab your lunch and join us then!



Welcoming Our Students!

We are committed to training the next generation of

researchers and practitioners. Each year GSDI is excited to welcome talented students to our team.

Join us in welcoming our team members for the
2020 - 2021 academic year!



Graham Zulu, MSW

Graham is an international Ph.D. student of social work at UNC Chapel Hill and a Research Assistant with GSDI. His research interests include socio-economic policy, global social work, and HIV prevention. He is eager to work on the design, implementation, and evaluation of intervention studies that combine financial inclusion and asset building components with other health-promoting programs.



Mohit Tamta, MA

Mohit is a second-year MSW student at UNC and a Research Assistant at GSDI. Mohit's research interests include homelessness, urban poverty, and housing informality. He has a strong interest in advocating for housing rights and community-based interventions that seek to uplift the urban poor living in low-resource countries. Before starting at UNC, Mohit worked with various non-profit and government institutions in different research capacities for 4 years in New Delhi, India.



Naana Ewool

Naana (she/her) is a first year student in UNC-CH's MSW program, a Weiss Urban Livability Fellow, and a Research Assistant with GSDI. Her research interests include the different ways Black communities keep one another safe throughout the world, and she would like to use social work skills for radical movement work.

Ruth Samuel

Originally from Macon, Georgia, Ruth Samuel (she/her) is a senior Morehead-Cain Scholar pursuing journalism and a minor in Hispanic Studies. She is a member of the North Carolina Fellows Program, serves as the social media chair for the Carolina Association of Black Journalists, and previously led The Bridge, a publication

for women and non-binary people of color on campus. When she's not writing about identity, pop culture, or politics for Teen Vogue, you can find her binge-watching her favorite shows on Netflix. Ruth joins the GSDI Team as a Communications Program Assistant.



Faculty Member Awards & Appointments



Dr. Gina Chowa awarded Johnson-Howard-Adair Distinguished Professor of Social Work

"I look forward to the future with excitement for the continued research that my team will do and the new research areas that will be created as a result of this recognition," she said. "I am thrilled that I can be a part of bringing hope and changing systems."

[Read the full article here](#)

Dr. David Ansong appointed Wallace Kuralt Early Career Distinguished Scholar

"The impetus to pursue interventions to address social and economic inequalities, particularly in resource-constrained communities, both in the U.S. and globally, remains urgent because of the widening inequality gap," he noted.

[Read the full article here](#)



Recent Publications

- [Evidence of non-economic indicators as markers of success for youth in youth employability program: Insights from a South Africa study](#)
- [Direct and indirect associations of food insecurity, adolescent-parent relationship, and adolescent future orientation](#)
- [Youth food insecurity in Ghana and South Africa: Prevalence, socioeconomic correlates, and moderation effect of gender](#)
- [Household food insecurity and educational outcomes in school-going adolescents in Ghana](#)

